



**ALASKA DIVISION OF HOMELAND SECURITY &
EMERGENCY MANAGEMENT**

SITUATION REPORT 21-349 • DECEMBER 15, 2021



Toll-Free 1.800.478.2337

Anchorage Area 907.428.7000

SEOC 907.428.7100

<p><u>SEOC Preparedness Level</u> Level 1 – Normal Operations</p>	<p>http://ready.alaska.gov</p>	<p><u>National Terrorism Advisory System:</u> Read the updated NTAS Bulletin here</p>
<p><u>Maritime Security (MARSEC)</u> Level:1-Minimum Appropriate Security Measures</p>	<p>WHO Novel Coronavirus Pandemic (COVID-19): 2019 Novel Coronavirus</p>	<p><u>Alaska Military Installation Force Protection Level:</u> FPCON Bravo</p>

(Significant changes from previous situation reports are in red.)

Significant Issues:

None.

Threat Level Changes:

None

State of Alaska Department of Health and Social Services (DHSS)

DHSS is now leading the State of Alaska COVID-19 Recovery through Department Operations, supported by SEOC and other state departments as required.

For current COVID-19 information, see:

<https://covid19.alaska.gov/>

<https://www.cdc.gov/coronavirus/2019-ncov/index.html>

NTAS BULLETIN

To read current or expired advisories, click the link below:

<https://www.dhs.gov/national-terrorism-advisory-system>

Travel Alerts and Conditions

For current driving conditions dial 511 or link to <http://511.alaska.gov/>

Barry Arm Landslide / Tsunami Risk

For the latest information on the Barry Arm Landslide and Tsunami risk, click here: [DGGG Barry Arm Landslide and Tsunami Hazard](#)

Recent Earthquakes

USGS Earthquake Information: <http://earthquake.usgs.gov/>

National Tsunami Warning Center: <http://tsunami.gov/>

Alaska Volcanoes

Davidof Alert Level: **Advisory** and Aviation Color Code: **Yellow**

Great Sitkin Alert Level: **Watch** and Aviation Color Code: **Orange**

Pavlof Alert Level: **Watch** and Aviation Color Code: **Orange**

Semisopchnoi Alert Level: **Watch** and Aviation Color Code: **Orange**

For Alaska Volcano updates, go to: <https://www.avo.alaska.edu/>

Air Quality Index (AQI) Advisories

A Stage 1 Alert remains in effect for the Fairbanks Zone **until 8:00 A.M. tomorrow.**

A Stage 2 Alert remains in effect for the North Pole Zone **until 8:00 A.M. tomorrow.**

For the most up to date Air Quality Index Advisories:

<http://dec.alaska.gov/Applications/Air/airtoolsweb/Home/Index>

Spills of Oil and Hazardous Substances

The ADEC Spill Prevention and Response page is located at:

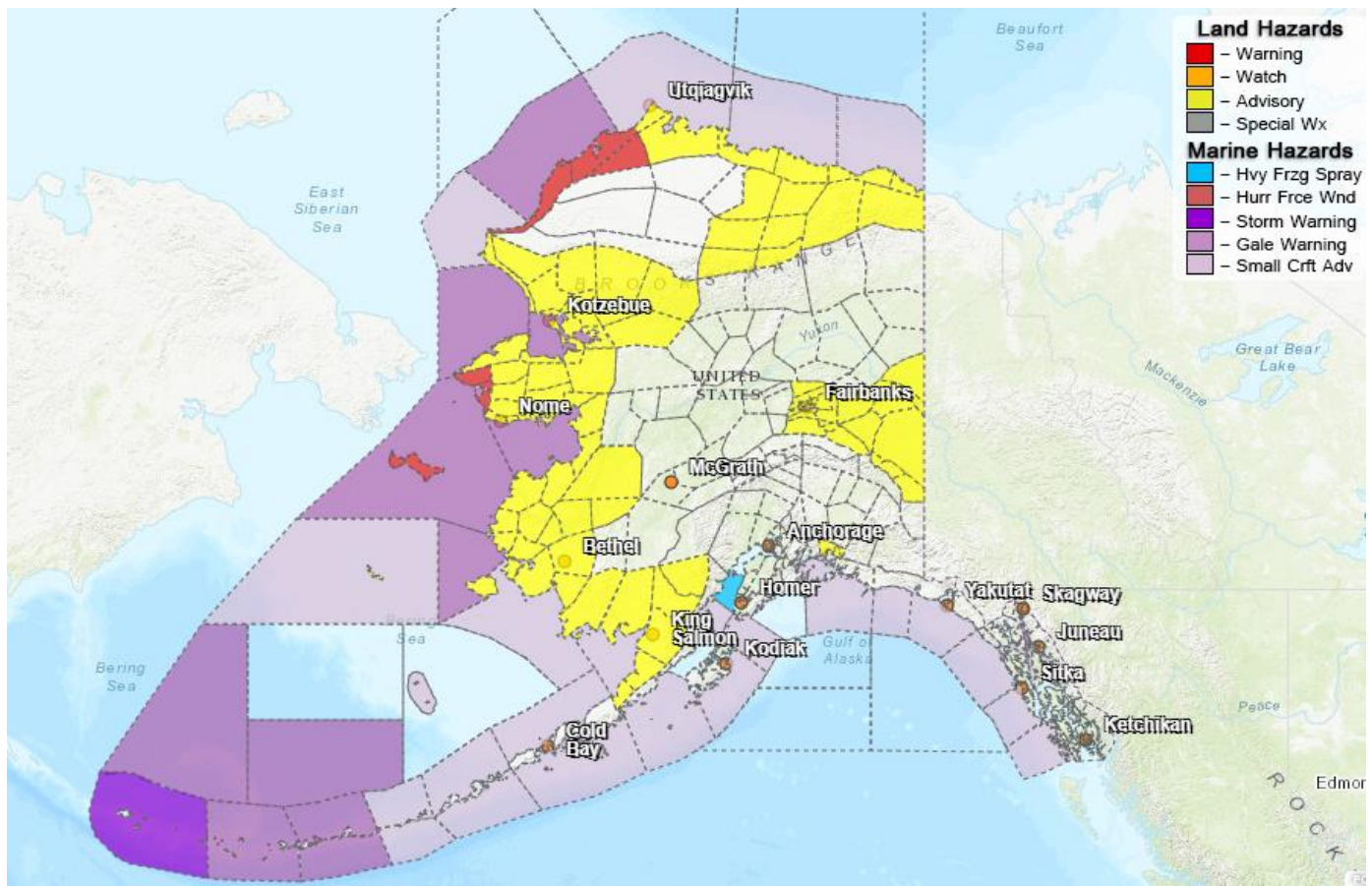
<http://dec.alaska.gov/spar/ppr/spill-information/response/>

Alaska Cyber Security Information

State Employees may sign up for cyber security notifications and alerts at

<https://oit.alaska.gov/security>

Significant Weather:



A Blizzard Warning remains in effect for St. Lawrence Island and the Bering Strait coast until midnight tonight. 4 to 8 inches of snow and 70mph winds.

Winter Weather Advisories are in effect for the following areas:

- Kuskokwim Delta until 9:00 P.M. today. – 4 to 7 inches of snow and gusting winds.
- Central and Eastern Beaufort Sea Coast and the Northern Arctic Coast until 6:00 P.M. tomorrow. – Cold wind chills and blowing snow.
- Northeastern Brooks Range from 9:00 P.M. today until 9:00 P.M. tomorrow. – Cold wind chills and blowing snow.
- Yukon Delta until midnight tonight. 4 to 6 inches of snow.
- Southern Seward Peninsula and Eastern Norton Sound until noon tomorrow. – 3 to 6 inches of snow.
- Chukchi Sea Coast, Kobuk, Noatak and lower Yukon Valleys, Baldwin Peninsula and the northern and Interior Seward Peninsula until 4:00 P.M. tomorrow. – Cold wind chills and blowing snow.
- Bristol Bay from 5:00 P.M. today until noon on Thursday. – 5 to 9 inches of snow.

Wind Chill Warning, Watches and Advisories are in effect for the following areas:

- Western Arctic Coast until noon tomorrow.
- Northeast Prince William Sound until 5:00 P.M. today.
- Upper Tanana Valley and the Deltana and Tanana Flats from noon today until noon tomorrow.

A Dense Fog Advisory is in effect until noon today for the Middle Tanana Valley.

For more information and the most current weather, Watches / Warnings / Advisories go to:

<http://www.weather.gov/arh>

Avalanche Forecast:



There are areas near Valdez, the Richardson Highway, Chilkat Lake and Haines with considerable risk; and near Cordova with moderate risk.

Check the Avalanche Forecast Center closest to your area for the most up to date information on avalanche potential. <https://alaskasnow.org> or <https://www.weather.gov/afc/avalancheweather>

The Next Situation Report: will be 16 December 2021. A significant change in the situation or the threat level will prompt an interim report.

This report is posted on the internet at <https://ready.alaska.gov/sitrep>. To register for email distribution, go to <http://list.state.ak.us/mailman/listinfo/dhsem.situation.report>. Direct questions regarding this report to the SEOC at 907-428-7100 or seoc@alaska.gov